

am it, we'll build it.



DAMAX CONSTRUCTION COMPANY LTD.



LOCATION:
Chartfield Avenue (opp. Adabraka Market)
P. O. Box GP20631, Accra
Tel: +233 21 246734/ 252894/2
Fax: +233 21 246734
Email: damaxconst@yahoo.com
Web: www.damaxestates.com



AFFORDABLE HOUSING

Damax Construction Limited, established in 1991 as Developers of Commercial Properties (stores & Offices) have grown from strength to strength to become one of the nations most reputable Civil Engineer and Real Estates Developments Company.

Within a relative short period, Damax has endeared itself to its numerous clients (resident & non-residents). Our hallmark continue to be **affordability, attractiveness and solidness of our house.**

Damax has reputation and resources to under financing and construction, marketing and timely delivery of your housing project. Such packages are attractively presented with prices that are inclusive of cost of land, professional design services, and infrastructure (i.e. Roads, pavements and drains). Payment of all transactions are made through reputable banks such as Merchant Bank Ghana, Ghana International Bank, Standard Chartered Bank, National Investment Bank, HFC Bank, & Amalgamated Bank. Once the minimum deposits is paid, Damax will deliver within six months.



LAND & LOCATION

Damax Construction Company Limited has at the moment 100 acres of developable land at its **Satellite Earth Station Site**, about 1km off the Accra-Nsawam Highway. The first phase of the project has been completed.

OTHER LOCATION

East Legon Extension, Dunkonah, Adenta-Dodowa Road. We have put in place all the infrastructure, water, electricity and telephone lines.



LAYOUTS

We have professionally-design layouts for easy access to individual houses, natural ventilation, Lighting efficient drainage and water disposal systems.

At Damax, we develop, build houses specially suited for **user comfort.** Our clients testify to this. In our house designs, careful planning is done to provide adequate space for indoor activities such as large kitchen, large storage space.



STANDARD DETACHED HOUSES

- 2-bedroom Detached Expandable
- 2-Bedroom Detached with carport
- 3-Bedroom Detached with carport & garage
- 3-Bedroom Expandable
- 4-Bedroom (2 storey executive)
- 5-Bed room En-Suite
- 4- Bed room (2 Storey executive with boys quarters)

STANDARD FEATURES

- Coloured Roofing Tiles
- Ceramic Wall and
- Floor Tiles Bathroom/Kitchen

EXECUTIVE HOUSES

Provision for Executive House and other Facilities, e.g. Outhouses and storey building are available on request and designed to suit clients specifications.

OTHER FEATURES

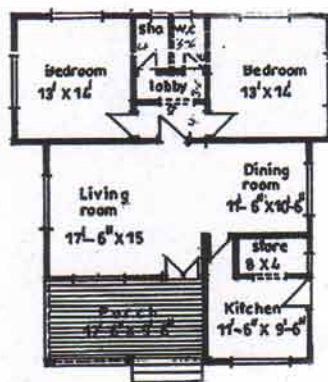
- Terrazo Floors
- Tiles/PVC Tiles
- Provision for Built-in Wardrobe/ Closet
- Shower and Handwash Basins
- Bathroom/ Bath Tub
- Kitchen Sinks and Provision for Electric Cooker
- Mosquito Net
- Burgular-Proof Windows/ Louvres
- Fence Wall & Steel Gates

OPTIONAL FEATURES

- Standard with Executive Houses
- External Driveway/Walkway
- Concrete Paving
- T&G Ceiling
- Plaster of Paris
- Water Heater per Bathroom
- Aluminum Profile Windows
- Bore hole & Pump
- Kitchen Cabinet Up & Down

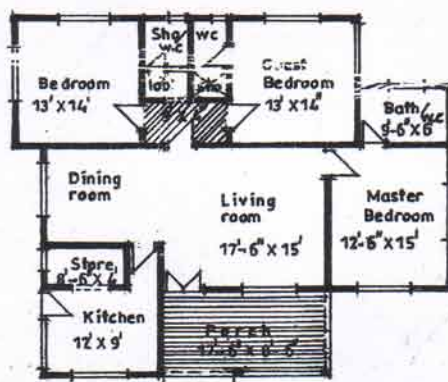


2 BEDROOM



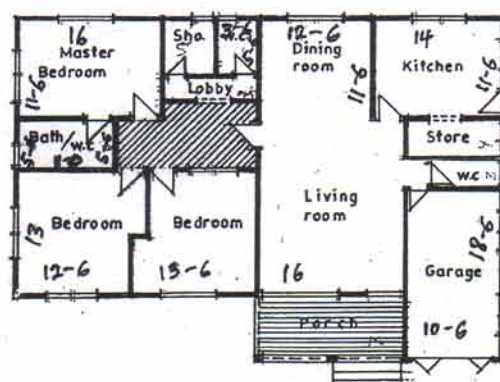
GROUND FLOOR PLAN

3 BEDROOM WITHOUT GARAGE

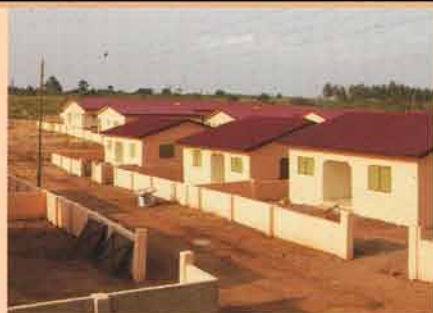


GROUND FLOOR PLAN

3 BEDROOM WITH GARAGE



GROUND FLOOR PLAN



TERMS OF PAYMENTS

40% Deposit
40% Roof Level
20% Upon Completion
Also our payments are negotiable for customer satisfaction

FORMS OF PAYMENT

Cash to Damax Estates Limited
Bank Transfers (Wire/ Telephone)
Bankers Draft
International Money Orders

EXPECTED PERIOD OF COMPLETION

Six months after 1st Deposit
Mandatory Payments: after Housing Purchase

BANKERS

Merchant Bank Ghana (Adabraka)
Ghana International Bank (London)
Standard Chartered Bank (Tudu)
National Investment Bank (Weija)
HFC Bank (Ebankese)
Amalgamated Bank (Farrar Avenue)

DAMAX
CONSTRUCTION COMPANY LTD.

...dream it, we'll build it.



DAMAX CONSTRUCTION COMPANY LTD.

LOCATION: Chartfield Avenue
(opp. Adabraka Market)
P. O. Box GP 20631, Accra
Tel: +233 21 246734/ 252894/2
Fax: +233 21 246734
Email: damaxconst@yahoo.com
Web: www.damaxestates.com

U.K. CONTACTS
Kwame Banwell
J.S.A & Associate
216 Brigscocock Road
Thorton Heath
Surrey, CR 7 7 JD
Tel: +44 0208 2397124
FaX: +44 02082397125

Christine Banwel
Tel: 079303133867
Fax: + 0208 3113073
E-mail: askdamax@yahoo.co.uk

U.S.A. CONTACTS
Alice Asare
Tel: +0016786203199
Email: alice_asare@yahoo.com

